



It's time to end exterior monotony.

MARVIN 
Windows and Doors
Built around you.®



Introducing the Marvin Curb Appeal.

We're making an appeal to end exterior monotony. No longer should you have to feel shackled by the limitations of clad windows and doors. It's time you and your customers had a choice. That's why we're taking a stand with 19 color options, 9 casing profiles, 6 subsills, and an extremely durable extruded aluminum that's substantially stronger than roll-form aluminum with a protective Kynar® finish that offers superior resistance to fading and chalking.

We're giving you the product selection you deserve and making them easier than ever to order. Just one call and all your needs are covered. Everyone will appreciate windows and doors made with furniture-grade construction that are easy to install, flexible in design and come with a wide array of options to help a vision come to life. Our windows and doors not only perform beautifully, but are also a true reflection of personal style and an end to exterior monotony.

WE BUILD MARVIN EXTERIOR CLAD PRODUCTS TO LAST.

Our extruded aluminum is substantially stronger than roll-form aluminum. Marvin exterior clad products are so strong, they exceed the American Architectural Manufacturers Association's toughest specification (2605-05) for aluminum cladding, which requires extruded aluminum and a 70% Kynar finish. In addition to a great exterior, the interior is made from wood, not only making them beautiful but also improving thermal efficiencies, creating a product that's tough to beat.



MARVIN CLAD



The difference in strength is similar to the difference in the thickness of an industrial chair versus an inexpensive lawn chair.

ROLL-FORM



Roll-form aluminum isn't much thicker than a pop can. It is easily bent and damaged. Most windows using roll-form aluminum come standard with a less expensive paint coating which can easily fade, chalk and scratch.

VINYL



Vinyl expands and contracts due to heat and cold. Couple this issue with the damaging effects of UV light, the vinyl will eventually chalk and fade. This constant climatic attack breaks the vinyl down, leaving a brittle, faded shell behind.

The image displays three distinct cross-sections of aluminum extrusion profiles. The top-left profile is a large, complex shape with a black interior and two small white 'E' marks. The middle-right profile is a smaller, more intricate design with multiple internal chambers and a black interior. The bottom-left profile is a simpler, multi-chambered design with a black interior. The profiles are set against a light, neutral background.

Performance for a lifetime.



COLUMBUS CASING WITH
A1452 SUBSILL IN HAMPTON SAGE



KINSELY CASING WITH
A1451 SUBSILL IN CASHMERE



RIDGELAND CASING WITH
A1453 SUBSILL IN CADET GRAY



POTTER CASING WITH
A1451 SUBSILL IN CASCADE BLUE



FLAT CASING WITH
A246 SUBSILL IN WINEBERRY



GRAYSON CASING WITH
A1450 SUBSILL IN BRONZE



BRICK MOULD CASING WITH
A246 SUBSILL IN EBONY



THORTON CASING WITH A1453
SUBSILL IN SHERWOOD GREEN



STRATTON CASING WITH
A1452 SUBSILL IN STONE WHITE

TIME EXPOSURE-CHALKING.

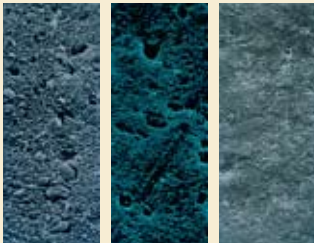
These microscopic images illustrate the superior resistance to chalking that Flurospar with Kynar 500 has over standard finishes. Notice the heavy pitting that occurs over time due to chalking.

UNEXPOSED



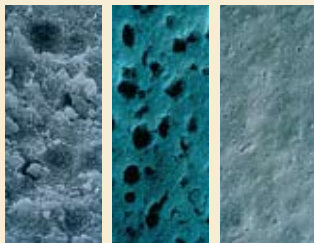
ACRYLIC SILICONE POLYESTER 70% KY-NAR 500

51 MONTHS



ACRYLIC SILICONE POLYESTER 70% KY-NAR 500

160 MONTHS



ACRYLIC SILICONE POLYESTER 70% KY-NAR 500

TIME EXPOSURE-FADING.

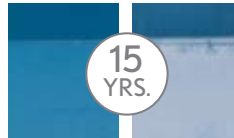
These panels illustrate the superior resistance to fading that our Flurospar with 70% Kynar 500 has over standard finishes used in roll-form and vinyl.



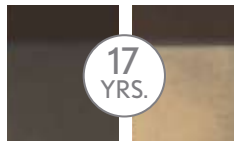
Marvyn Polyester Powder



Marvyn Polyester



Marvyn Urethane



Marvyn Silicone Polyester

10 YEAR FADING COMPARISON



Shown in Hampton Sage. This is a simulation and does not reflect an actual test.



EXTRUDED ALUMINUM CLAD FINISH.

Lasting durability starts with a chemical reaction. Our standards for durability and beauty are high, so it took years of engineering to master the superior finish that comes standard on all Marvyn clad products. During manufacturing, we create a chemical bond between the extruded aluminum and Flurospar[®], a fluoropolymer finish with 70% Kynar 500[®]— an advanced and extremely hard finish. Extrusions go through a five-step pre-treatment process that includes cleaners, rinses, and surface preparation to ensure the Flurospar finish adheres smoothly. Our extrusions are formed, then painted, which means a quality paint adhesion unlike roll-form which is painted then formed.

This means beauty is not interrupted by chalking, pitting, fading, erosion and marring. Your Marvyn clad products will retain color and gloss for years to come. We wouldn't settle for anything less.

CURB APPEAL COMES IN EVERY COLOR.

You can choose from the wide array of clad colors shown here or just imagine it and we can create custom colors to optimize the beauty of any project.

STANDARD COLORS



Printed color may not be an accurate representation. Ask your local Marvin retailer for color chips.

SELECT COLORS



THERE'S ALWAYS A PROFILE TO MATCH.

The profiling of our clad extrusions accurately replicates the beauty and sophistication of real wood. But at Marvin, history doesn't repeat itself; it's always improved upon. For your design vision, we have the ideal aluminum clad windows with classic-lined profiles to help achieve the type of curb appeal you have in mind.

<p>FLAT CASING</p> 	<p>SUBSILL COMPATIBILITY</p> <p>A217 A246</p>	<p>GRAYSON CASING</p> 	<p>SUBSILL COMPATIBILITY</p> <p>A1450 A1452 A1451 A1453</p>	<p>STRATTON CASING</p> 	<p>SUBSILL COMPATIBILITY</p> <p>A1452 A1453</p>
<p>BRICK MOULD CASING</p> 	<p>SUBSILL COMPATIBILITY</p> <p>A217 A246</p>	<p>KINSLEY CASING</p> 	<p>SUBSILL COMPATIBILITY</p> <p>A1450 A1452 A1451 A1453</p>	<p>THORTON CASING</p> 	<p>SUBSILL COMPATIBILITY</p> <p>A1450 A1452 A1453</p>
<p>COLUMBUS CASING</p> 	<p>SUBSILL COMPATIBILITY</p> <p>A1450 A1452 A1451 A1453</p>	<p>RIDGELAND CASING</p> 	<p>SUBSILL COMPATIBILITY</p> <p>A1453</p>	<p>POTTER CASING</p> 	<p>SUBSILL COMPATIBILITY</p> <p>A217 A1451 A246 A1452 A1450 A1453</p>

SUBSILLS FOR EVERY VISION.

Beauty and design doesn't need to stop at the sill. Marvin has a wide selection of sills to complement your choice of casing for a unified look throughout your project.

Due to the variety of combinations of casings and subsill options available, special dimensional considerations for different installation methods will be required. Please contact your local Marvin retailer when specifying these casing and subsill combinations.





Endless options for infinite appeal.



For more information on the complete line of Marvin windows and doors, visit us at www.marvin.com or call **1-800-407-0035**. In Canada call **1-800-263-6161**.

Clad colors may not be an accurate representation.
Ask your local Marvin retailer for color chips.