

# MARVIN® CONTEMPORARY



**MARVIN**   
Windows and Doors  
Built around you.®

SOMETIMES THE BEST THING  
A WINDOW CAN DO IS GET OUT OF THE WAY  
AND LET THE VIEW BE THE STAR.



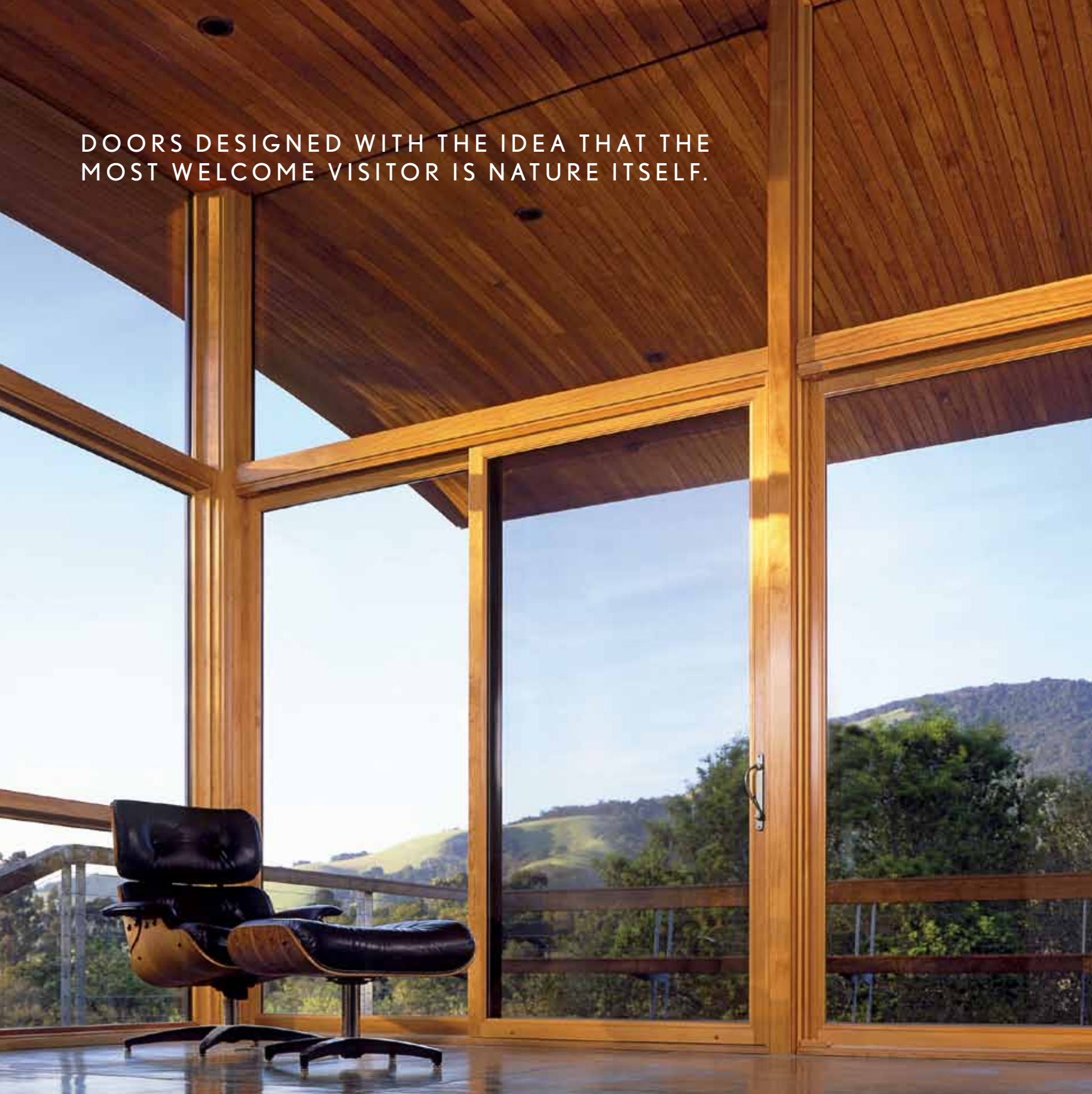
**MARVIN® CONTEMPORARY WINDOWS**

Contemporary design is about maximum light and minimum clutter. It's about connecting the great outdoors with the great indoors with big expanses of glass, natural wood, and clean, bold lines. Marvin's contemporary wood windows are the perfect way to transform your vision into a beautiful reality.



LEFT // ARCHITECT: VUJOVICH DESIGN BUILD PHOTO: SUSAN GILMORE  
ABOVE // ARCHITECT: COOPER CARRY PHOTO: JONATHAN HILLYER

DOORS DESIGNED WITH THE IDEA THAT THE MOST WELCOME VISITOR IS NATURE ITSELF.



LEFT // MARVIN ARCHITECT CHALLENGE WINNER & PHOTO: KENT CHILCOTT

ABOVE // MARVIN ARCHITECT CHALLENGE WINNER: JON HENSLEY, SUNNY CARROLL PHOTO: STEVE MAXWELL

### **MARVIN CONTEMPORARY DOORS**

Marvin® contemporary doors are more than a point of entry, they open up your entire home - even when they're closed. Rich, natural wood frames the scenic view outdoors, welcoming in as much sunlight as the day will bring. While on the outside, clean, modern lines and minimal hardware complement and showcase the architectural details of your home.

THE LARGER THE GLASS,  
THE DEEPER THE CONNECTION BETWEEN  
YOU AND THE GREAT OUTDOORS.



ABOVE // ARCHITECT: CHARLES R. STINSON BUILDER: STINSON BUILDERS PHOTO: PAUL CROSBY  
MIDDLE // ARCHITECT: ROBERT M. GURNEY PHOTO: MAX MACKENZIE  
BOTTOM // ARCHITECT: NILS FINNE PHOTO: ERIC HAUSMAN

## THE ARCHITECTS' VIEW



// CHARLES L. STINSON

**CHARLES R. STINSON ARCHITECTURE + DESIGN**  
MINNEAPOLIS, MN

Architecture now has such a connection with the outside and with nature that it becomes very important to have quality windows that create that strong visual connection. Our style is modern, beautiful to look at, but it's also warm. The glass areas are treated as space, where you create the environmental change. Wood adds warmth, it's part of that harmonic balance between material, space and form.



// ROBERT M. GURNEY

**ROBERT M. GURNEY, FAIA ARCHITECT**  
WASHINGTON, D.C.

My view is that modern design must be site-responsive. We're not taking a pre-designed building form or house design and just plopping it on a site, we're actually designing our house to respond to the site: topography, solar orientation, what views you want, what views you don't want, and what the wind pattern is. Our work is light-filled, open, and there's a lot of glass. It's about an open way of living.

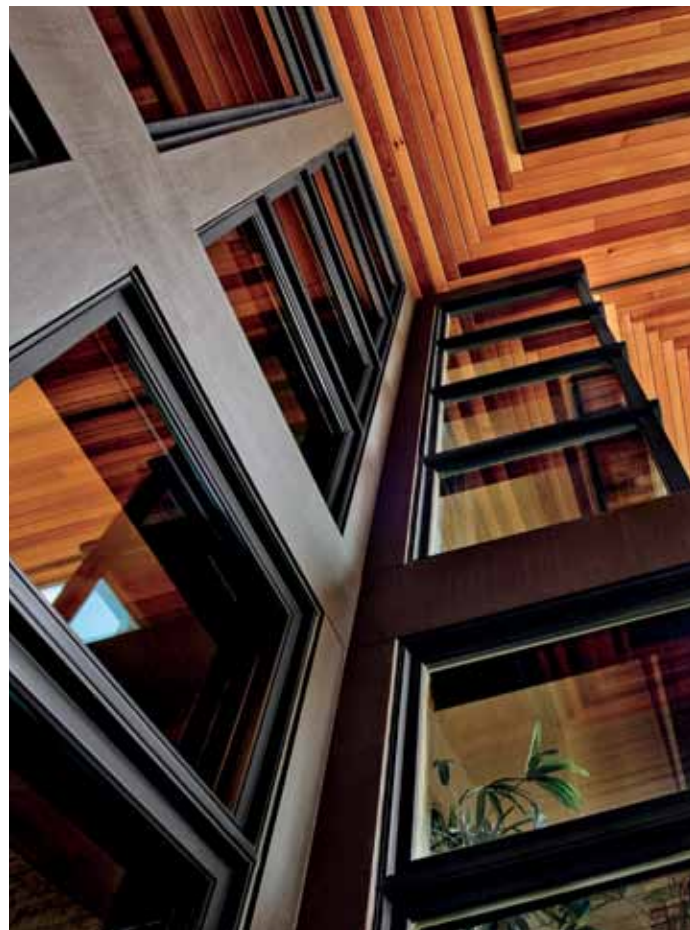


// NILS FINNE

**FINNE ARCHITECTS**  
SEATTLE, WA

We used Marvin® on the very first project we did and many projects since then. I have always been extremely impressed by the technical back-up with Marvin. The folks at Marvin are very responsive and helpful when we have had questions about installation, sizes, and other technical issues. The cladding is very crisp, it's nicely detailed and works very well with the architecture. We never feel hindered.

MARVIN® WINDOWS  
COME IN A VARIETY OF STYLES.  
BORING IS NOT ONE OF THEM.



**ULTIMATE CASEMENT & AWNING AND ULTIMATE REPLACEMENT CASEMENT & AWNING**

Our large contemporary operating windows feature expansive glazing and massive views, with dimensions as large as 36"x96" or 72"x72", and are ideal for solo use or grouped. Minimal hardware streamlines sight lines. Options like narrow frames, square sticking and retractable screens keep lines open and profiles clean, delivering exceptional ease of use, strength and thermal efficiency that meets or exceeds ENERGY STAR® guidelines.

**VENTING PICTURE WINDOW**

The Venting Picture window optimizes your view and opens straight out, gently letting air current in on all sides. With limited sash travel that gives an open window the appearance of being closed, it also enhances security.

**CORNER WINDOW**

The contemporary architectural challenge of the corner is elegantly solved with this factory supplied mulling system to create clean lines. There are no exposed fasteners, the stops match and the windows can be stacked above and below to create an even grander view.



**ULTIMATE GLIDER**

Superior performance and minimal design combine to create assemblies as large as 10' by 6', with an expanse of glass as big as all outdoors. And just like nature itself, the real beauty is in the details - things like the innovative, low-profile and ergonomic hardware or the proprietary sash removal system for easy cleaning.

**DIRECT GLAZE/POLYGONS**

Maximize the natural light pouring into your space and minimize the frame with distinctive combinations of polygon designs. These unique windows allow you to make a sleek, bold, assured statement that's thoroughly contemporary. Challenge us with your best ideas.



## MARVIN® DOORS. WHATEVER YOUR VISION, MARVIN IS WIDE OPEN.

### BI-FOLD

With a breath-taking 21' opening to the outdoors, our Bi-fold Doors open the imagination for outdoor living spaces, room expansions into adjoining interior areas and many more creative uses. Complement the scene with our contemporary Architectural Hardware options.

### LIFT AND SLIDE

With openings that stretch a full-panoramic 47', the Lift and Slide affords a nearly seamless transition between the comfort of your home and the beauty of the surrounding landscape. Even the hardware blends into the background. On the interior, an exclusive flush mount handle flows into the stile edge. Outside is nothing but clean sight lines with minimal hardware. The Lift and Slide Door can be designed to open in either a stacked configuration or can be hidden within the wall as a pocket door. Add square sticking for reduced shadow lines and a high-performance sill.



### INSWING/OUTSWING

With their minimalist design, superior energy efficiency and incredible ease of use, there's a reason our contemporary Inswing and Outswing Doors are among our most popular. Add details that complement any design aesthetic, like sophisticated Valli & Valli door hardware.

### SLIDING PATIO DOOR

Combining narrow stiles and panels that span up to four feet, the Sliding Patio Door lets you fully enjoy the available light. An optional ADA-compliant, High Performance Low Profile Sill lets you move effortlessly from exterior to interior. Available with Nobilus hardware, rectangular escutcheons and varied pulls.

### ARCHITECTURAL HARDWARE

Contemporary hardware is essential for the clean, modern aesthetic. Our contemporary options include hardware from Valli & Valli, crafted by Italian designers and artisans. Choose your style at [Marvin.com](http://Marvin.com).



**TELL US YOUR VISION. WE'LL HELP YOU CREATE IT.**

CALL 1-888-819-2470 OR VISIT [WWW.MARVIN.COM](http://WWW.MARVIN.COM) FOR MORE INFORMATION

FRONT // MARVIN ARCHITECT CHALLENGE WINNER: ERIC GARDNER PHOTO: DANIEL LEVIN  
BACK // ARCHITECT: ROBERT GURNEY PHOTO: MAX MACKENZIE



©2013 Marvin® Windows and Doors. All rights reserved. ®Registered trademark of Marvin Windows and Doors. ENERGY STAR® and the ENERGY STAR certification mark are registered U.S. marks. Part #19980605.